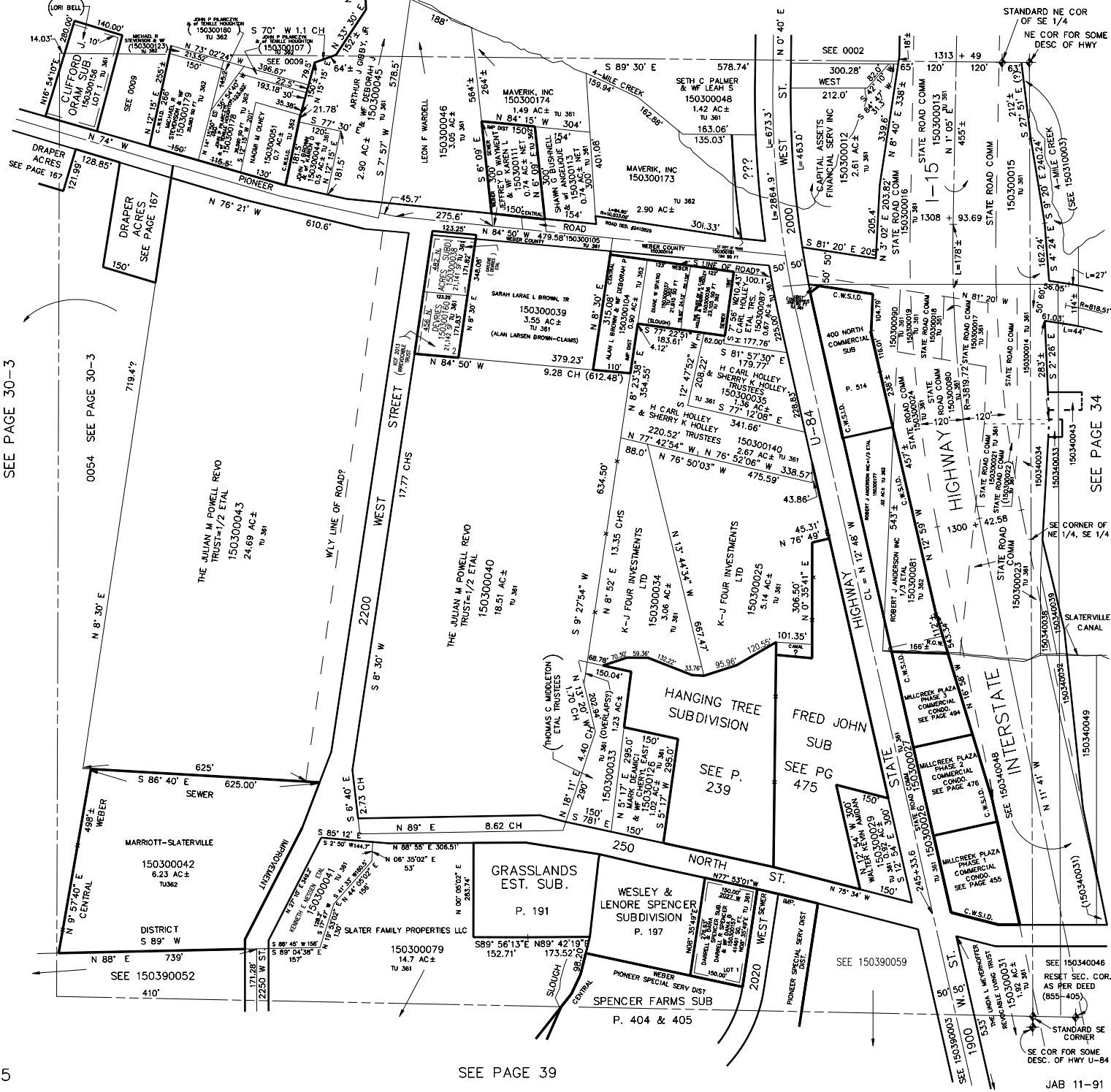


SECTION 11, T.6N., R.2W., S.L.B. & M.

IN MARIOTT-SLATERVILLE CITY

SCALE 1" = 200'

TAXING UNIT: 361, 362



SEE PAGE 30-3

0054 SEE PAGE 30-3

DRAPER ACRES
SEE PAGE 167

DRAPER ACRES
SEE PAGE 167

THE JULIAN M POWELL REVOCABLE TRUST=1/2 ETAL
150300043
24.69 AC±
TU 361

THE JULIAN M POWELL REVOCABLE TRUST=1/2 ETAL
150300040
18.51 AC±
TU 361

GRASSLANDS EST. SUB.
P. 191

WESLEY & LENORE SPENCER SUBDIVISION
P. 197

SPENCER FARMS SUB
P. 404 & 405

HANGING TREE SUBDIVISION
SEE P. 239

FRED JOHN SUB
SEE PG 475

MILLCREEK PLAZA PHASE 2 COMMERCIAL CONDO
SEE PAGE 484

MILLCREEK PLAZA PHASE 2 COMMERCIAL CONDO
SEE PAGE 476

MILLCREEK PLAZA PHASE 1 COMMERCIAL CONDO
SEE PAGE 455

THE LURA L. MERRIFORTH REVOCABLE TRUST
150300051
1.92 AC±
TU 361

SEE 150340046
RESET SEC. COR. AS PER DEED (855-405)

STANDARD SE CORNER
SEE COR FOR SOME DESC. OF HWY U-84

SEE PAGE 34